

Laser Cutter Operation

Step #1

**Turn on the Laser
Cutter using the switch
on the left side of the
machine**



Step #2

Choose a material. This what we recommend:

- Start with cardboard to perfect your design
- Utilize the material in the recycle bin next
- Use your own material
- If you must, use a new piece of material

Ask if using a foreign material



Cardboard

Recycle Bin

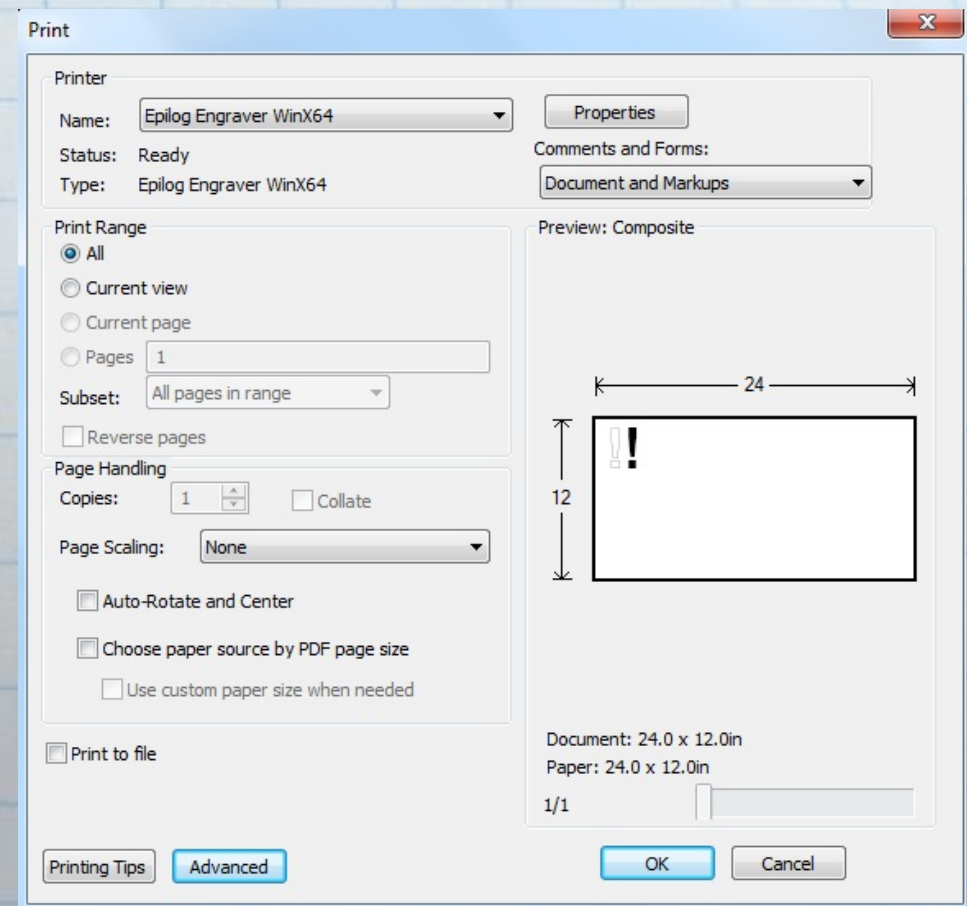
Step #3

- **Open the glass lid of the Laser Cutter**
- **Place your material in the upper left corner of the platform against the side rulers**
- **Measure the material using the side rulers**
- **Close the lid**



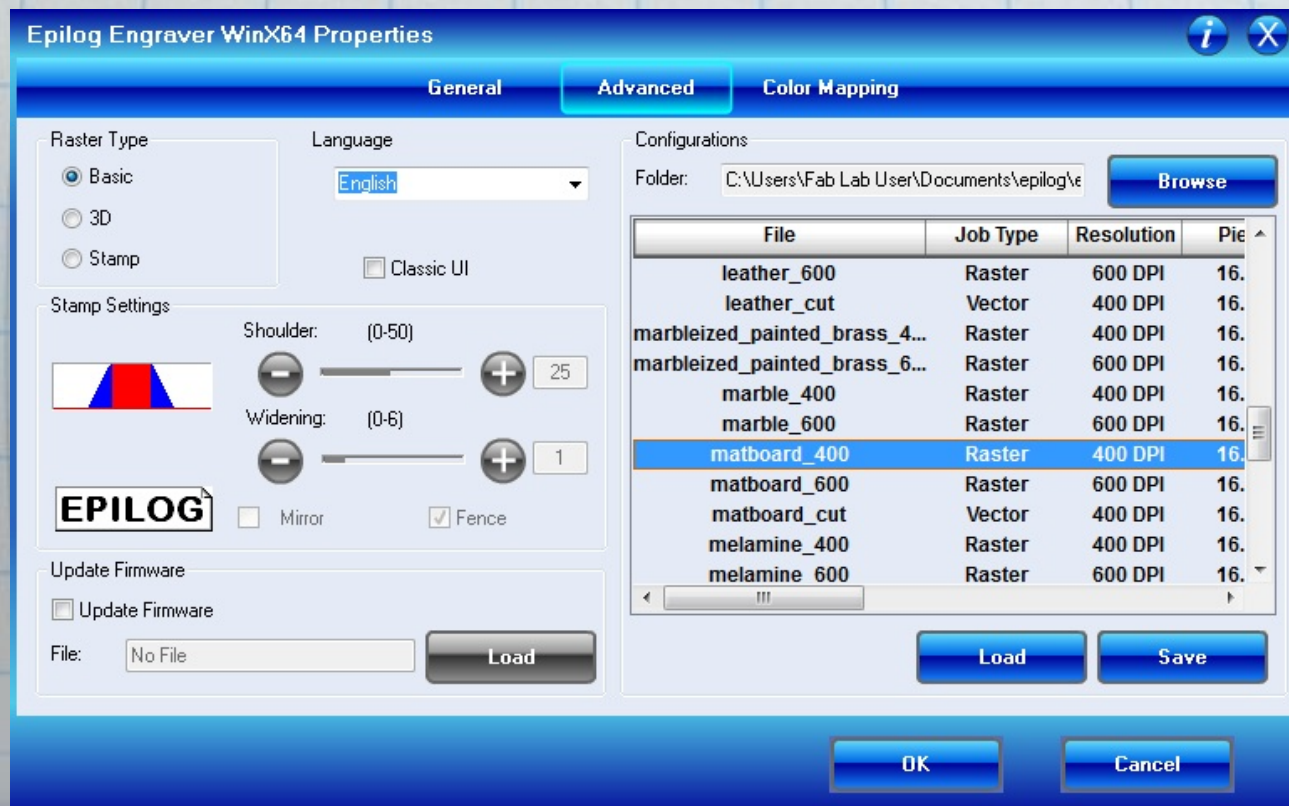
Step #4

- **Open the PDF format of your design in Adobe Reader**
- **Select printer icon**
- **Make sure your settings match the window pictured to the left**
- **Select Properties**



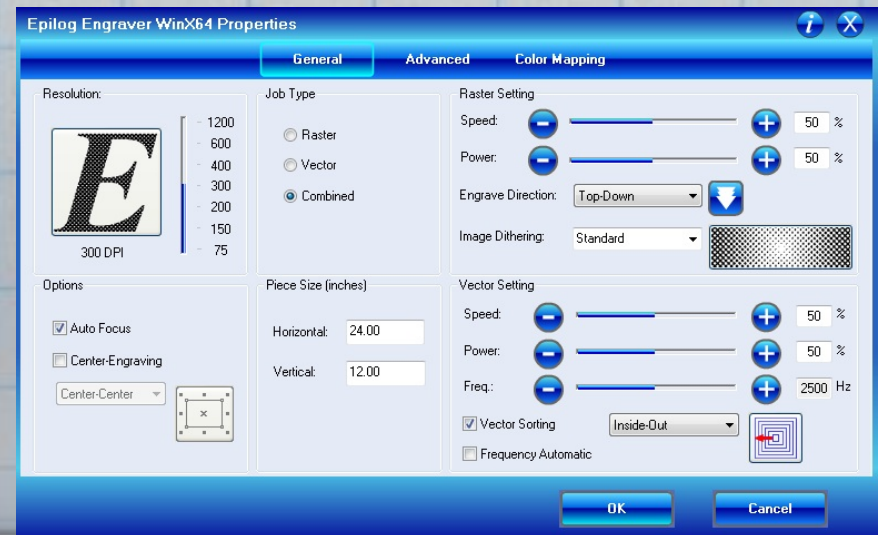
Step #5

- Select the Advanced tab
- Select your material from the list and then Load
- If your material isn't listed, please ask staff



Step #6

- Return to the General tab
- Make sure Auto Focus is enabled if using sheet material. Consult staff regarding manual focus.
- Enter the Horizontal/Vertical size of workpiece
- Press OK on Epilog Properties Window and on the Print Dialog Window



Step #7

- Your file name will appear on the Laser Cutter's interface screen
- **DO NOT PUSH GO!**



Step #8

**TURN ON THE
EXHAUST VENT SWITCH!!!**



Step #9

Push Go

and

DON'T LEAVE THE MACHINE!



Step #10

- **After job is complete, turn off the Exhaust Vent Switch**
- **Open the Laser Cutter lid**
- **Remove your design and all scraps**
- **Recycle usable scrap and throw away what is left**
- **Place everything back in their proper places**
- **Turn off machine**
- **Leave the workstation better than you found it!**